



WELCOME
TO THE
FUTURE

Wireless "Top Up" Electricity





NFC



ZigBee®



Lte



WIRELESS CONTANT

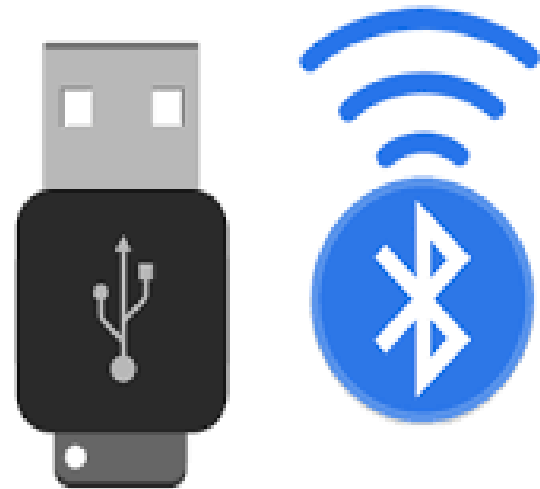
- ◆ **2 in 1 Main Power Box**
- ◆ **Corresponding Appliance Ballast**
- ◆ **HomeLands Mobile Connector**
- ◆ **Connection&Maintenance**
- ◆ **Software Update Connection**
- ◆ **Safety**
- ◆ **Investment**
- ◆ **Mission And Vision**

2 in1 Connection Main

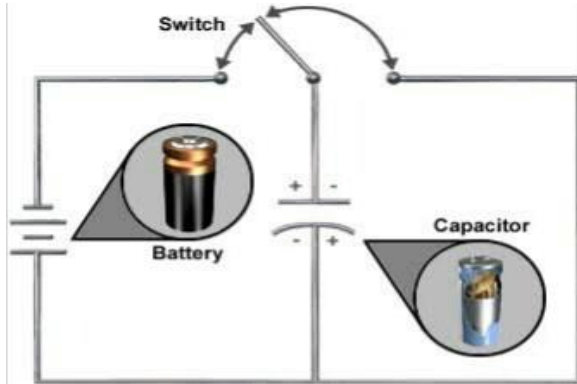
◆ Main Connector Lcd



◆ Power Bank Ports



Corresponding Appliance Ballast



3 In 1 Appliance

◆ **Cap(Recyclable Charges)**

◆ **Built-In Secondary
Bettry(rechargeable&replaceable)**

Homeland Mobile Connection

- ◆ **Up To 30 meters Radiation RF Connection.**
- ◆ **Multiple Signal Receiver.**
- ◆ **Single 220v Built In Plug.**

Maintenance

◆ **Cap Replacement.**

◆ **Ballast Test.**

◆ **Application Updates.**

◆ **Service Monitoring.**

◆ **Advance Charging Cycle's Guarantee**

Software Updates

- ◆ **Updatable Chip Laser Sense.**
- ◆ **QR Barcode Scanner.**
- ◆ **Power Saving Mode application.**
- ◆ **Domestic And Business Mode Settings**
- ◆ **RF Cap**

Safety Features

◆ **Heat Resistant**

◆ **Anti-Explosive**

◆ **No Leaks Cover.**

◆ **Anti-Theft Serial Back Trace.**

◆ **RF Only Responding Relatively To Main Cap**

Investments

- ◆ **Copper Landline Recycle**
- ◆ **Land Pole's To Generate Income.**
- ◆ **Powerstations To Power Banks.**
- ◆ **Smoke Cleaners.(Other Invention)nonhazardous. Liquid Generated.**

Mission And Vision

✓ Mission

◆ To Guarantee No Harm. Such As Cable Theft. Tempering And Electric Black Out Mostly. In A form Of Advanced Latest Technology High Power Gear Units With 24/7 Monitored Service Wirelessly.

✓ Vision

◆ Power Beyond Origin Of Imagination And Technology Innovation. Let There Be Guarantee Of Elocution With Energy!