



Nojoli Wind Farm

NERSA PUBLIC HEARING



20 February 2014



NOJOLI WIND FARM (86.6MW) PREFERRED BIDDER – IPPID RE_OW_0024_002

Project Company Name:

Nojoli Wind Farm is incorporated within ACED Cookhouse South Wind Farm (Pty) Ltd (whose name is being changed to “Nojoli Wind Farm (RF) (Pty) Ltd”

Registered address:

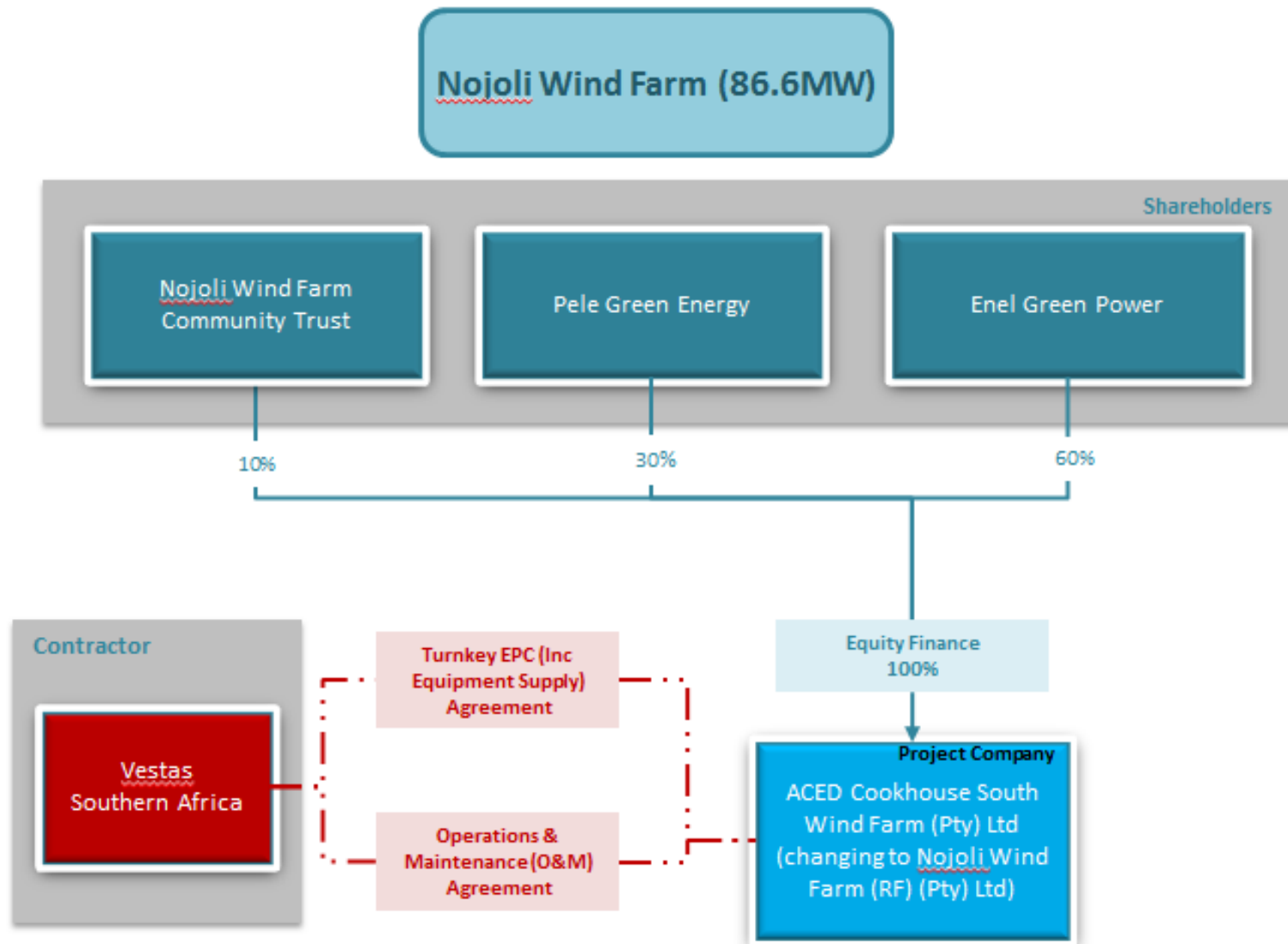
Fernwood House, 2nd Floor
The Oval, 1 Oakdale Road
Newlands, 7700
Cape Town
South Africa

Contact Person: Mary Waller

Tel: +27 (0) 21 670 1402

Email: mary.waller@aced.co.za

PROJECT STRUCTURE





The Developer Company Overview – AFRICAN CLEAN ENERGY DEVELOPMENTS

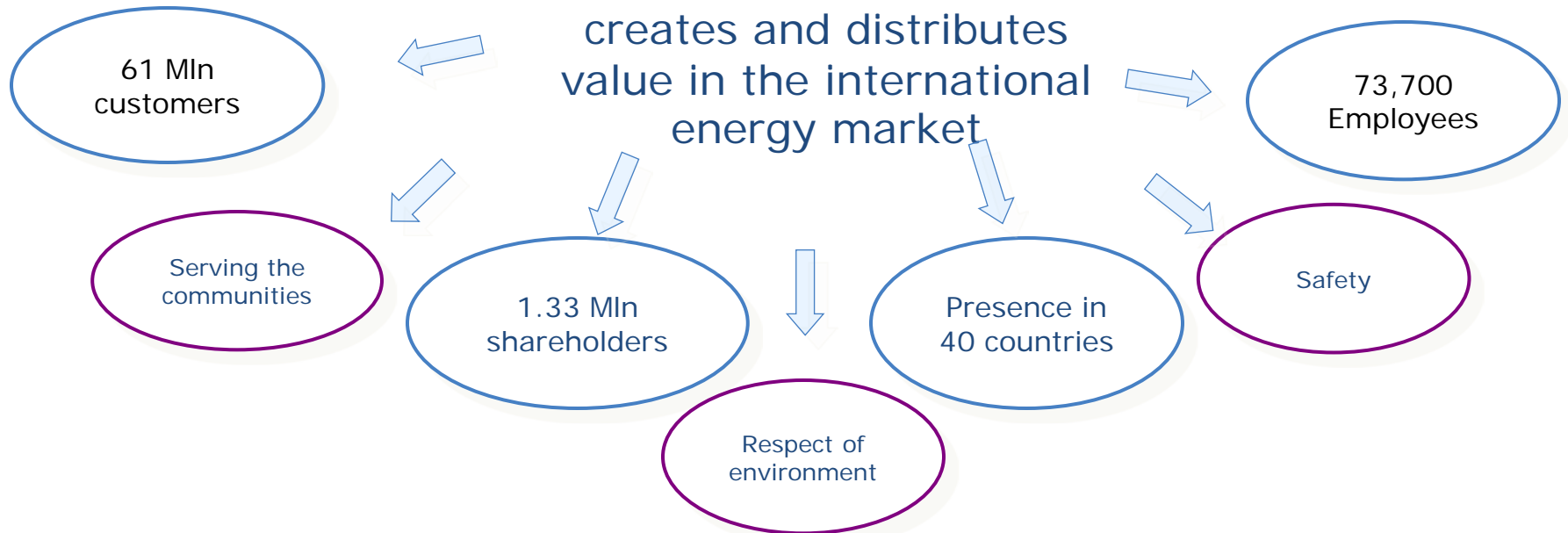
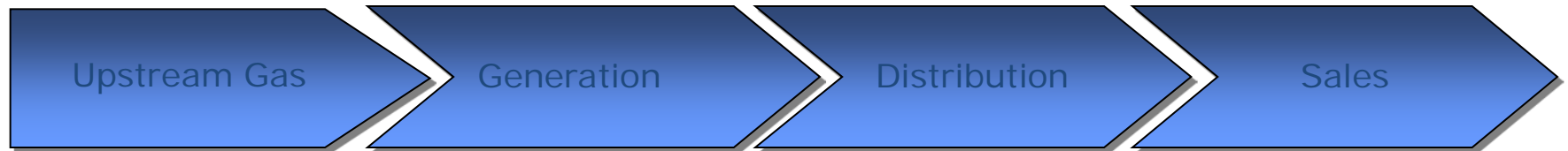
- African Clean Energy Developments (Pty) Limited (ACED) is a South African registered company dedicated to the development of renewable energy projects in Sub-Saharan Africa
- ACED and its shareholders, African Infrastructure Investment Manager (Pty) Ltd and AFPOC Limited, have an established track record in renewable energy projects in South Africa and globally
- In the South African Renewable Energy Independent Power Producer Procurement Programme (REIPPPP), ACED and its shareholders are involved in the development, bidding, investment and construction of in excess of 280MW of wind projects and 75MW of solar photovoltaic projects, with a further pipeline of some 1,000MW across these technologies under development
- The ACED business has been in operation for 5 years and is at the forefront of renewable energy development in South Africa

The Sponsor Company Overview – ENEL GREEN POWER SOUTH AFRICA BV

- Established specifically for participation in the Third Bid Submission Phase of the Renewable Energy IPP Procurement Programme
- Views for long term presence / complex business plan in South Africa
- Experienced investor
- Subsidiary of Enel Green Power S.p.A. which in turn is subsidiary of Enel S.p.A.
- EGP is already participating indirectly in Uppington PV Project (in construction, awarded under the Second Round)



ENEL GROUP INTRODUCTION



ENEL GREEN POWER – Renewables company of the ENEL Group- Global Presence as of September 2013

North America

- Capacity: 1,679 MW
- Production: 4.9 TWh
- Technologies: 



Iberia&Latam

- Capacity: 2,898 MW
- Production: 8.5 TWh
- Technologies: 

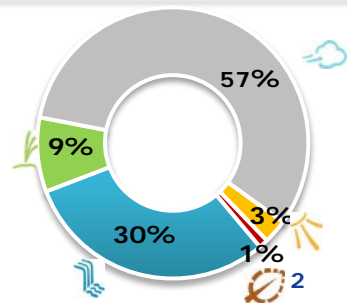


Italy&Europe

- Capacity: 4,112 MW
- Production: 15.3 TWh
- Technologies: 

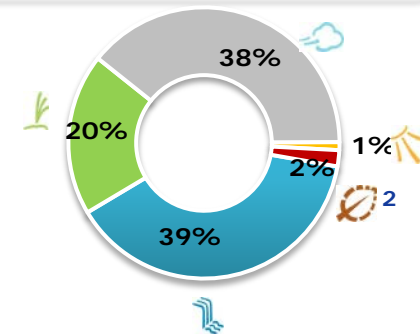


Capacity by technology



Total = 8.7 GW

Production by technology



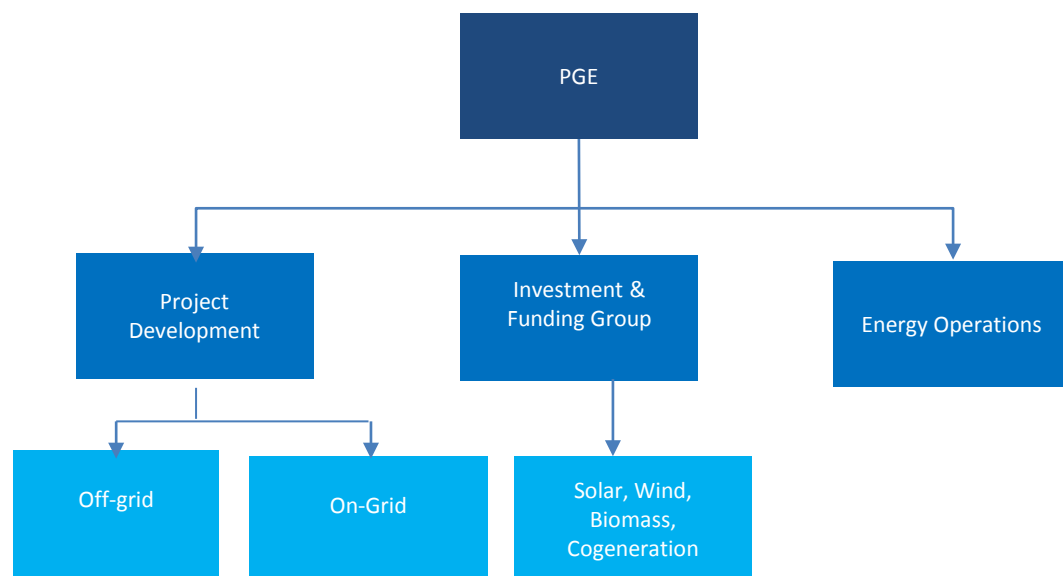
Total = 28.7 TWh

20/02/2014

- Reported capacity as of September 30, 2013. Reported production latest twelve months
- Including co-generation

Geo  Hydro  Wind  Biomass  Solar 

BUSINESS OVERVIEW – PELE GREEN ENERGY



- Pele Green Energy is a 100% black owned Independent Power Producer (“IPP”) that develops, owns and operates renewable energy power plants.
- We own and operate over 250MW of wind and solar power plants.
- Base-load power projects are developed and operated through our sister company Pele Natural Energy which is 100% owned by the founders of PGE.
- PGE is intrinsically involved in the communities it operates in and our work in socio-economic development is done through our sister company Knowledge Pele.

Summary of key activities:

- **Project Development**

- **Off-grid** is focused on improving decentralized power access to small and medium sized users. This market is in its early phase but has proved the most socially sustainable model with various success in a few countries. We develop solutions for property developers (residential and commercial to medium sized organisations looking for self generation using several funding structures

- **Project Development On-grid (“ProDev”)** develops projects from green-fields phase all the way to financial close phase when the project is ready to commence construction. The ProDev team is involved in projects that are in early phase feasibility as well as projects that are further advanced towards bankable feasibility.

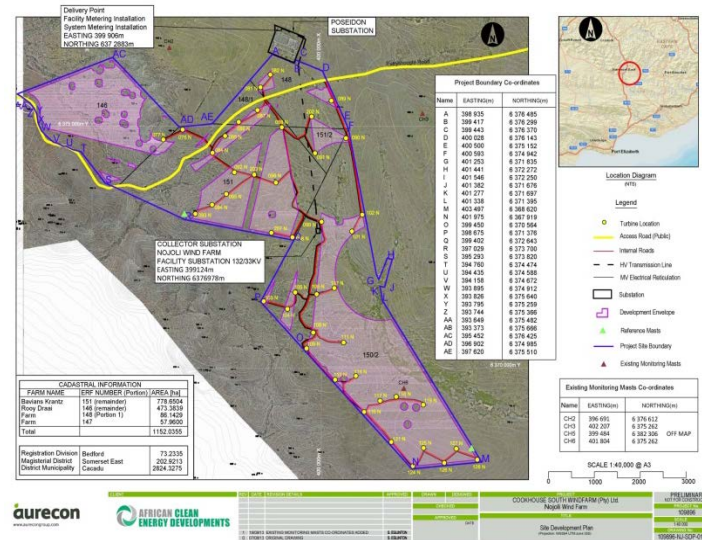
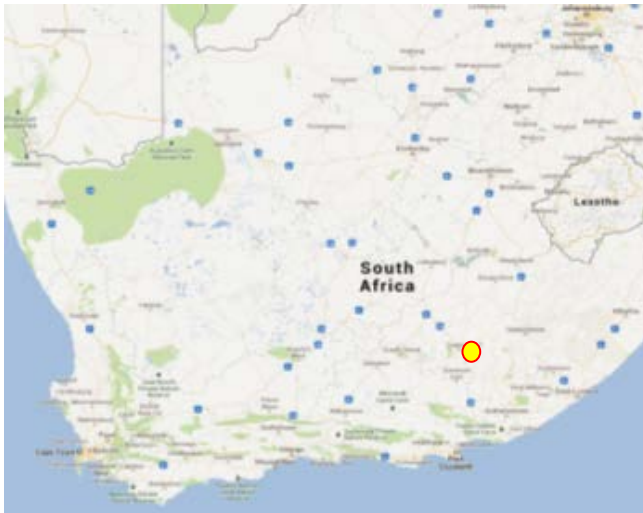
- **The Investment & Funding Group (“IFG”)** will invest in energy generation assets at various phases of the plant’s operational life. The business invests in energy power plants that are either developed by the internal team or other leading developers in the world.
- **Energy Operations (“EPC and O&M”)** is focused on the design (Front end & detailed design) and procurement functions of all Pele’s energy projects. This includes the management and negotiation of all EPC and O&M activities for the PEG. To this end, this unit has already secured a contract with Terni Energia, an Italian EPC company, to manage the local procurement office for the Uppington solar PV project (2nd round).

NAME & LOCATION OF THE WIND FARM

The Nojoli Wind Farm is located ~180 km north of Port Elizabeth in the Eastern Cape Province between the towns of Cookhouse and Bedford.

The Project site is located on a large plateau extending approximately 15km north to south and 10km east to west.

The Site Layout shows the anticipated positions of the wind turbines and site infrastructure (the internal electrical cabling will be underground and will follow the internal road routes), along with the Reference Masts and metering installations.





PROJECT TECHNICAL INFORMATION

Installed Capacity:	88MW
Contracted Capacity:	86.6MW
Wind Turbine Generator:	Vestas V100 2MW
Hub height:	80m
Number of WTGs:	44
Voltage Connection Level:	132kV
Grid integration:	Connection to Poseidon substation will be within acceptable limits for fault ride through, reactive power generation and operate in compliance with the Grid Connection Code for Renewable Power Plants, Version 2.6
Scheduled COD:	30 June 2016
EPC Contractor:	Vestas Southern Africa (Pty) Ltd
O&M Contractor:	Vestas Southern Africa (Pty) Ltd

JOB CREATION, COMMUNITY OWNERSHIP, DEVELOPMENT FUNDING, LOCAL CONTENT

JOB CREATION:

- In recognition and in support for the government's objectives to achieve job creation through the development of renewable energy projects, Nojoli Wind Farm has committed to progressive but sustainable job creation targets, with a strong focus on job creation for black South African people and particularly for job creation for people from local communities.

COMMUNITY OWNERSHIP:

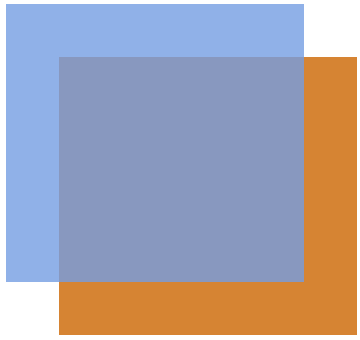
- The communities of Cookhouse, Bedford, Somerset East and Adelaide will collectively own 10% of the Nojoli Wind Farm
- This will be held by a Community Trust with benefits flowing to the community in the form of development initiatives, programmes and projects

DEVELOPMENT INITIATIVE FUNDING:

- The Nojoli Wind Farm project has made strong commitments to towards Enterprise Development Funding as well as Socioeconomic Development Funding in the local areas
- Project spend areas and initiatives will be determined through ongoing thorough needs and asset mapping research and multi-stakeholder engagement
- Using these significant sources of funds, focus will be given to targeting local socioeconomic and enterprise needs that will provide long term sustainable community benefits, helping to reduce poverty and unemployment, improve economic opportunities and social support structures, all the while generally assisting in boosting local economic growth and improving the quality of lives locally and at different levels: individuals, households and small enterprises or organisations.

LOCAL CONTENT:

- How much of the project value during construction will get spent in South Africa?
 - Local Content Commitment: **41.34%**



THANK YOU